

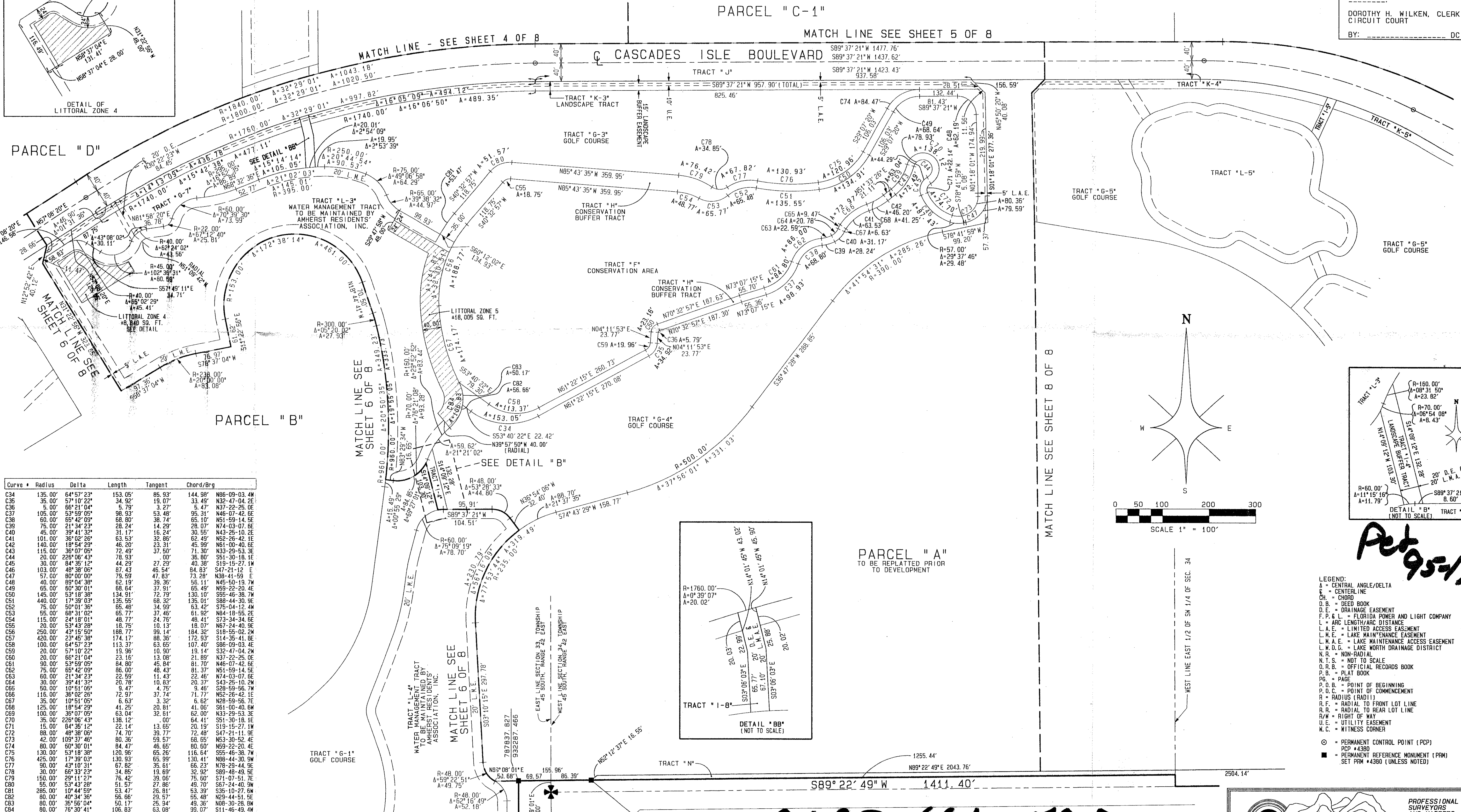
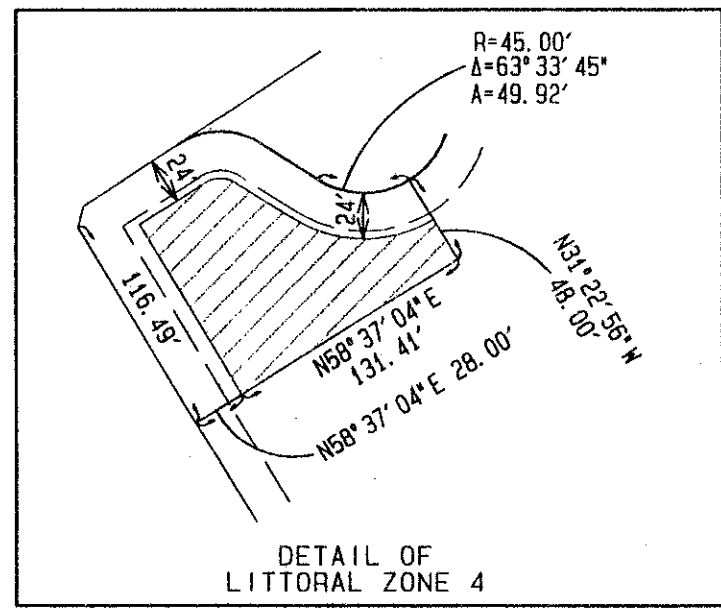
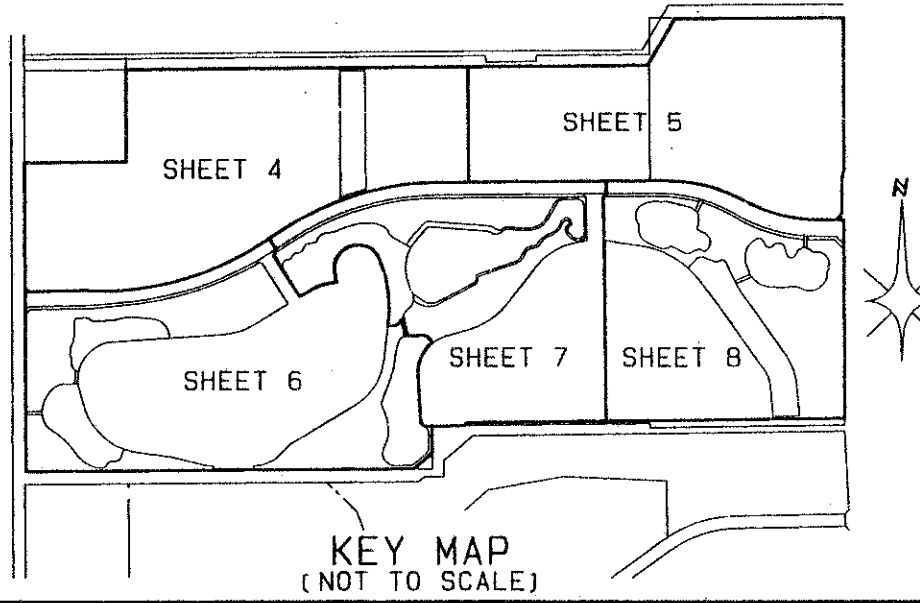
JONES P.U.D.

0683-001

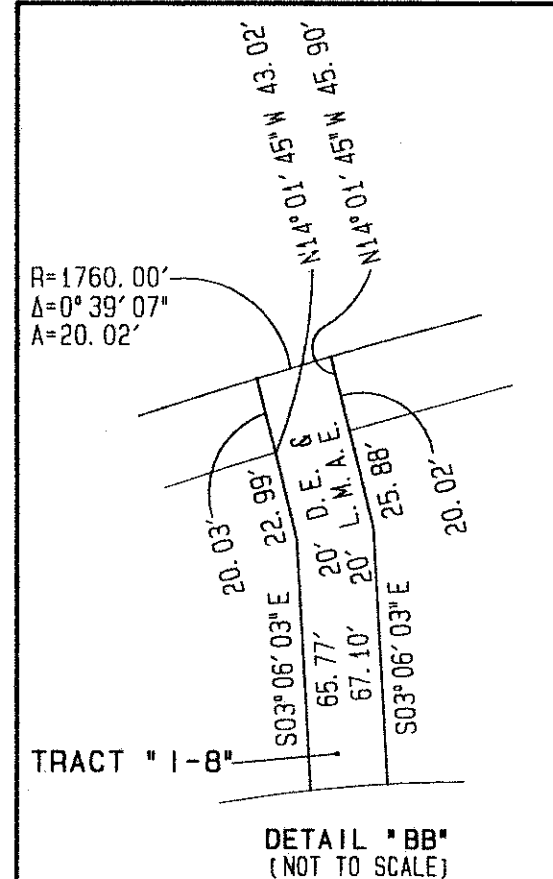
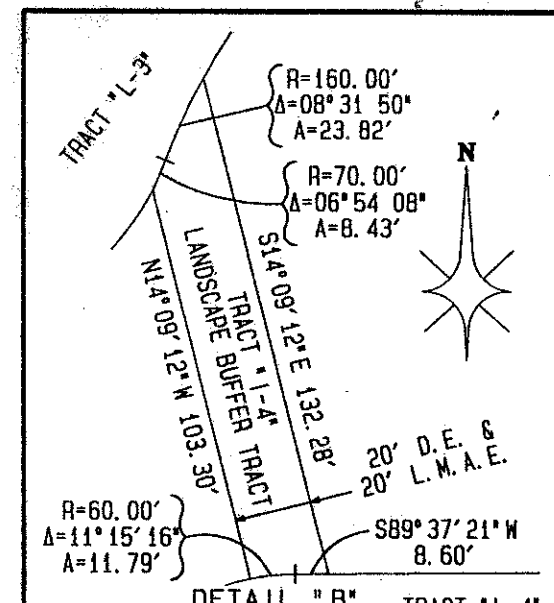
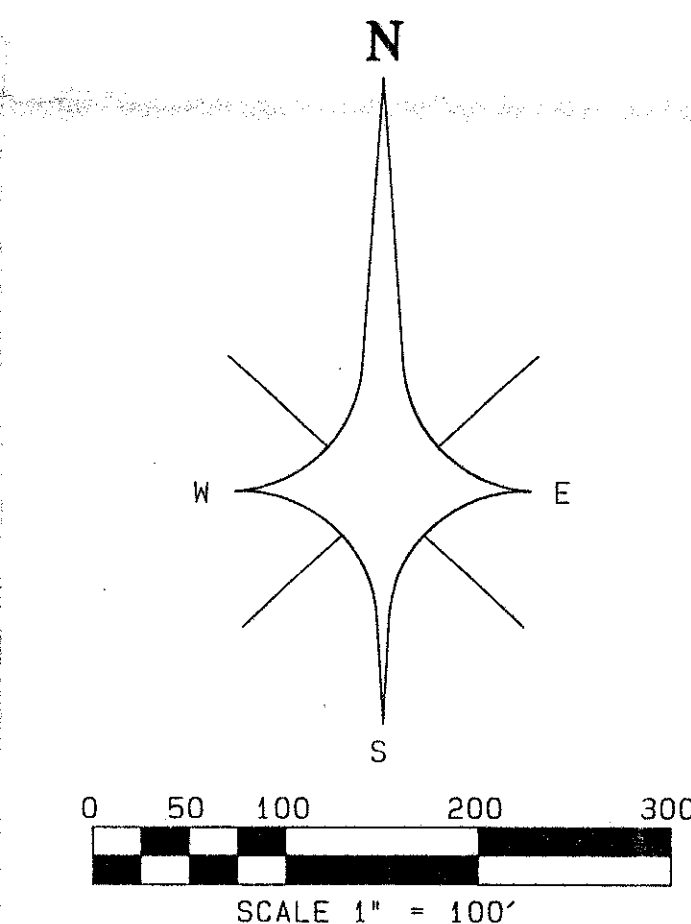
77

SITUATE IN SECTIONS 33 AND 34, TOWNSHIP 45 SOUTH, RANGE 42 EAST, AND SECTION 4, TOWNSHIP 46 SOUTH, RANGE 42 EAST, PALM BEACH COUNTY, FLORIDA; ALSO BEING A REPLAT OF A PORTION OF TRACTS 17 THROUGH 30, BLOCK 57; AND TRACTS 65 THROUGH 70, TRACTS 89 THROUGH 104, TRACTS 121 THROUGH 128, BLOCK 58, THE PALM BEACH FARMS COMPANY PLAT NO. 3, AS RECORDED IN PLAT BOOK 2, PAGES 45 THROUGH 54 INCLUSIVE; TOGETHER WITH A PORTION OF THE RIGHT OF WAYS ADJOINING SAID TRACTS AS SHOWN ON SAID PLAT OF PALM BEACH FARMS COMPANY PLAT NO. 3
SHEET 7 OF 8
AUGUST, 1996

STATE OF FLORIDA } SS
COUNTY OF PALM BEACH }
THIS PLAT WAS FILED FOR
RECORD AT _____ DAY OF
THIS _____ AD, 1996 AND
DULY RECORDED IN PLAT BOOK
_____ ON PAGES _____ AND
DOROTHY H. WILKEN, CLERK
CIRCUIT COURT
BY: _____ DC



Curve	Radius	Delta	Length	Tangent	Chord/Brg
C34	135.00'	64°57'23"	153.05'	85.93'	144.99'
C35	35.00'	57°10'22"	34.92'	19.07'	33.49'
C36	5.00'	86°21'04"	8.79'	3.27'	5.47'
C37	105.00'	86°21'04"	88.79'	88.93'	95.31'
C38	60.00'	65°42'09"	68.80'	36.74'	65.10'
C39	75.00'	21°34'23"	28.24'	14.29'	28.07'
C40	45.00'	39°41'29"	31.17'	16.24'	30.55'
C41	101.00'	36°02'26"	63.53'	32.86'	62.49'
C42	140.00'	18°54'29"	46.20'	23.31'	45.99'
C43	115.00'	36°07'05"	72.49'	37.50'	71.30'
C44	20.00'	228°08'43"	78.93'	0.00'	36.80'
C45	30.00'	84°35'12"	44.29'	27.29'	40.38'
C46	103.00'	48°38'06"	87.43'	46.54'	84.83'
C47	57.00'	80°00'00"	78.59'	47.83'	73.28'
C48	40.00'	89°04'38"	62.19'	39.36'	56.11'
C49	65.00'	60°30'01"	68.64'	37.91'	65.49'
C50	145.00'	53°18'38"	134.91'	72.79'	130.10'
C51	440.00'	17°38'03"	136.95'	68.32'	135.01'
C52	75.00'	50°01'36"	65.48'	34.99'	63.42'
C53	55.00'	68°31'02"	65.77'	37.46'	61.92'
C54	115.00'	24°18'01"	48.77'	24.76'	48.41'
C55	20.00'	53°43'28"	18.75'	10.13'	18.07'
C56	250.00'	43°15'50"	188.77'	99.14'	184.32'
C57	420.00'	29°45'38"	174.17'	88.36'	172.93'
C58	100.00'	57°57'38"	63.83'	33.07'	63.83'
C59	20.00'	57°10'22"	19.96'	10.90'	19.14'
C60	20.00'	66°21'04"	23.16'	13.08'	21.89'
C61	40.00'	59°38'06"	44.80'	25.84'	41.70'
C62	25.00'	65°42'09"	26.00'	14.43'	25.81'
C63	60.00'	21°34'23"	22.59'	11.43'	22.46'
C64	30.00'	39°41'29"	20.78'	10.83'	20.37'
C65	116.00'	36°02'26"	9.47'	5.25'	9.46'
C66	116.00'	36°02'26"	72.97'	37.74'	71.77'
C67	35.00'	10°51'05"	6.63'	3.32'	6.62'
C68	100.00'	36°07'05"	41.25'	20.81'	41.06'
C69	100.00'	36°07'05"	63.04'	32.61'	62.00'
C70	35.00'	226°06'43"	138.12'	0.00'	64.41'
C71	15.00'	84°35'12"	22.14'	13.65'	20.19'
C72	88.00'	48°38'06"	74.70'	43.77'	72.48'
C73	42.00'	109°37'46"	80.36'	59.57'	68.65'
C74	80.00'	60°30'01"	84.47'	46.65'	80.60'
C75	130.00'	53°18'38"	120.96'	65.26'	116.64'
C76	425.00'	17°38'03"	130.93'	68.32'	130.41'
C77	90.00'	43°10'31"	67.82'	35.61'	66.23'
C78	30.00'	66°33'23"	34.85'	18.69'	32.92'
C79	150.00'	29°11'27"	76.42'	39.06'	75.50'
C80	65.00'	53°43'28"	51.67'	27.86'	49.70'
C81	285.00'	10°44'59"	53.47'	26.81'	53.39'
C82	80.00'	40°34'36"	56.66'	29.57'	55.48'
C83	80.00'	35°55'04"	50.17'	28.44'	49.36'
C84	80.00'	75°30'41"	106.83'	63.08'	99.07'



- LEGEND:
- ∠ = CENTRAL ANGLE/DELTA
 - R = RADIUS
 - CH = CHORD
 - D.B. = DEED BOOK
 - D.E. = DRAINAGE EASEMENT
 - F.P. & L. = FLORIDA POWER AND LIGHT COMPANY
 - L = ARC LENGTH/ARC DISTANCE
 - L.A.E. = LIMITED ACCESS EASEMENT
 - L.M.E. = LAKE MAINTENANCE EASEMENT
 - L.M.D. = LAKE NORTH DRAINAGE DISTRICT
 - N.R. = NON-RADIAL
 - N.T.S. = NOT TO SCALE
 - O.R.B. = OFFICIAL RECORDS BOOK
 - P.B. = PLAT BOOK
 - PR. = PLAT
 - P.O.B. = POINT OF BEGINNING
 - P.O.C. = POINT OF COMMENCEMENT
 - R. = RADIUS (RADIAL)
 - R.F. = RADIAL TO FRONT LOT LINE
 - R.R. = RADIAL TO REAR LOT LINE
 - R/W = RIGHT OF WAY
 - U.E. = UTILITY EASEMENT
 - W.C. = WITNESS CORNER
- = PERMANENT CONTROL POINT (PCP)
 PCP #4380
 ■ = PERMANENT REFERENCE MONUMENT (PRM)
 SET PRM #4390 (UNLESS NOTED)

SUBDIVISION - JONES PUD
 PAGE 77
 FLOOD ZONE MH/B FLOOD MAP 2004
 ZONING PDD
 QUAD # 50
 ZIP CODE 33437
 PUD NAME JONES PUD

0683-001 78-77

PROFESSIONAL SURVEYORS AND MAPPERS
ATLANTIC - CARIBBEAN MAPPING, INC.
 3062 JOG ROAD GREENACRES, FLORIDA 33467
 (561) 964-7884; FAX (561) 964-1969